

Countdown Mastitis Focus fact sheet

Spread of infection

May 2009

The **New Infection Rate** shows how quickly infection is spreading to clean cows. This is usually not obvious as most mastitis infections are subclinical.

Dairy
Australia
Your Levy
at Work



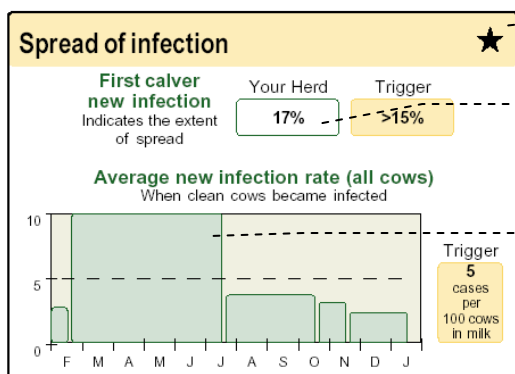
Taking immediate action when this measure is above the trigger level may help avert a clinical case outbreak.

The **Spread of Infection** box in your report shows when spread is active.

Ways to hone day-to-day farm management to help prevent the spread of mastitis in your herd are given on the next page. If you would like more detailed interpretation about what is happening in your herd contact a Countdown-trained adviser in your area or visit www.countdown.org.au

Understanding your report

TIP The **New Infection Rate** at the top of your report in **Your Herd Annual Performance Summary** gives the overall spread of infection for the entire report period



A single star rating indicates that you need to take action

If your herd has a high first calver new infection rate it confirms that spread is a real issue because heifers are clean before they first enter the milking herd

TIP Each bar on the graph represents the new infection rate between herd tests. Page 2 of your report shows the number of cows included at each herd test—make sure the number looks right!

Spread of infection	
Calving dates:	<input checked="" type="checkbox"/>
Clinical case records:	<input checked="" type="checkbox"/>
Herd test records:	<input checked="" type="checkbox"/>
Termination dates:	<input checked="" type="checkbox"/>
Birth dates:	<input checked="" type="checkbox"/>
First calver new infection The number of first calvers that developed a high cell count or clinical case during the report period:	65
Average new infection rate Average infection rate between herd tests:	
27.02.2007 -	2.8
17.07.2007 -	13.7
02.10.2007 -	3.7
27.11.2007 -	3.2
29.01.2008 -	2.4

TRAP If a tick is missing it means that those records were not available. Include all records to get a comprehensive report

TRAP If birthdates are not supplied then there may be inaccuracies in the number of animals classed as 'first calvers'

These are the actual rates that correspond to the graph on page 1

Your records

- Spread of infection can only be assessed in herds that participate in milk recording.
- Calving and termination (especially dry-off) dates are needed to establish the 'clean' group of cows.
- Birthdates are required to identify first calvers.

Areas to focus on when your star rating is low...



Disinfect teats thoroughly

Reducing the number of bacteria at the teat end is the single most effective way to prevent infection spreading

Quick check – Do you:

- Teat spray after every milking
- Use RTU or mix daily according to directions
- Ensure all teats are covered (the front teats too!)
- Use 20mL per cow per milking

Review Farm Guideline 7 Use post milking teat disinfection & Fact Sheet G The correct way to mix teat disinfectant



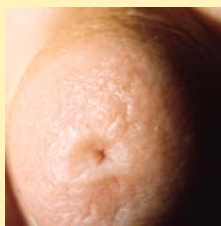
Stop spread of cow-associated bacteria at milking

Milk containing mastitis bacteria can move from cow to cow on hands, liners and by sudden air admission into the cluster ('impacts')

Quick check – Do ALL milkers:

- Wear gloves
- Cut the vacuum before removing teat cups
- Milk infected cows last

Review Farm Guideline 5 Use good milking technique and consistent routine & Farm Guideline 8 Practice good hygiene



Maintain healthy teat ends

Mastitis bacteria are more likely to enter through damaged teat ends - especially when machines are not functioning properly

Quick alert – Do you know if:

- Liners have milked more than 2500 cows
- There are more than 5 cup slips per 100 cows
- A lot of cows have damaged teat ends

Review Farm Guideline 6 Monitor and maintain milking machine function



Check which bacteria are spreading

You need current cultures from cows that are becoming infected to ensure appropriate herd management and case treatment. Bacteria such as *Strep ag* can spread rapidly

Quick check – Have you:

- Brought cows into the herd recently
- Sent at least 20 milk samples for culture recently
- Checked your sampling procedure
- Consulted your vet on treatment choices

Review Farm Guideline 21 Buying cows & Fact Sheet A Milk cultures



Cure infections over the dry period

Treatment at drying-off provides the opportunity to eliminate subclinical infections

- **Check** if your dry cow strategy is working by reviewing **Previous dry-off strategies** on your report
- **Use** the details in **Plan your next drying-off** – it's best to do this with your vet

See Fact Sheet C Guide to choosing an appropriate dry cow strategy